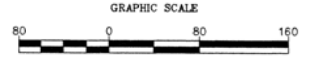


# REPLAT OF A PORTION OF SYRINGA SPRINGS PHASE 2, BLOCK 2 LOTS 1-16, AS RECORDED IN PAYETTE COUNTY BOOK 6, PAGE 76

A PORTION OF THE NORTHWEST 1/4 OF THE SOUTHWEST 1/4 OF  
SECTION 23, TOWNSHIP 8 NORTH, RANGE 5 WEST, BOISE MERIDIAN,  
CITY OF FRUITLAND, PAYETTE COUNTY, IDAHO

2007

SCALE = 1" = 80'  
18"x27" ONLY



- NOTES:
1. CONTOURS AND ELEVATIONS NOT SHOWN AS NONE CHANGED FROM ORIGINAL PLAT ONLY LOT LINES WERE RELOCATED.
  2. SEWER, WATER AND IRRIGATION PIPING REMAINS THE SAME AS APPROVED ON CONSTRUCTION DRAWINGS WITH ONLY INDIVIDUAL SERVICE LOCATION CHANGING.
  3. ROADWAY DESIGN HAS NOT BEEN CHANGED WITH THIS RE-PLAT.
  4. EASEMENTS ON LOTS TO REMAIN THE SAME AS PREVIOUS 8' SIDES, AND 10' FRONT AND BACK.
  5. LOTS 1-3 BLOCK 2 WERE ELIMINATED IN RE-PLAT PROCESS.

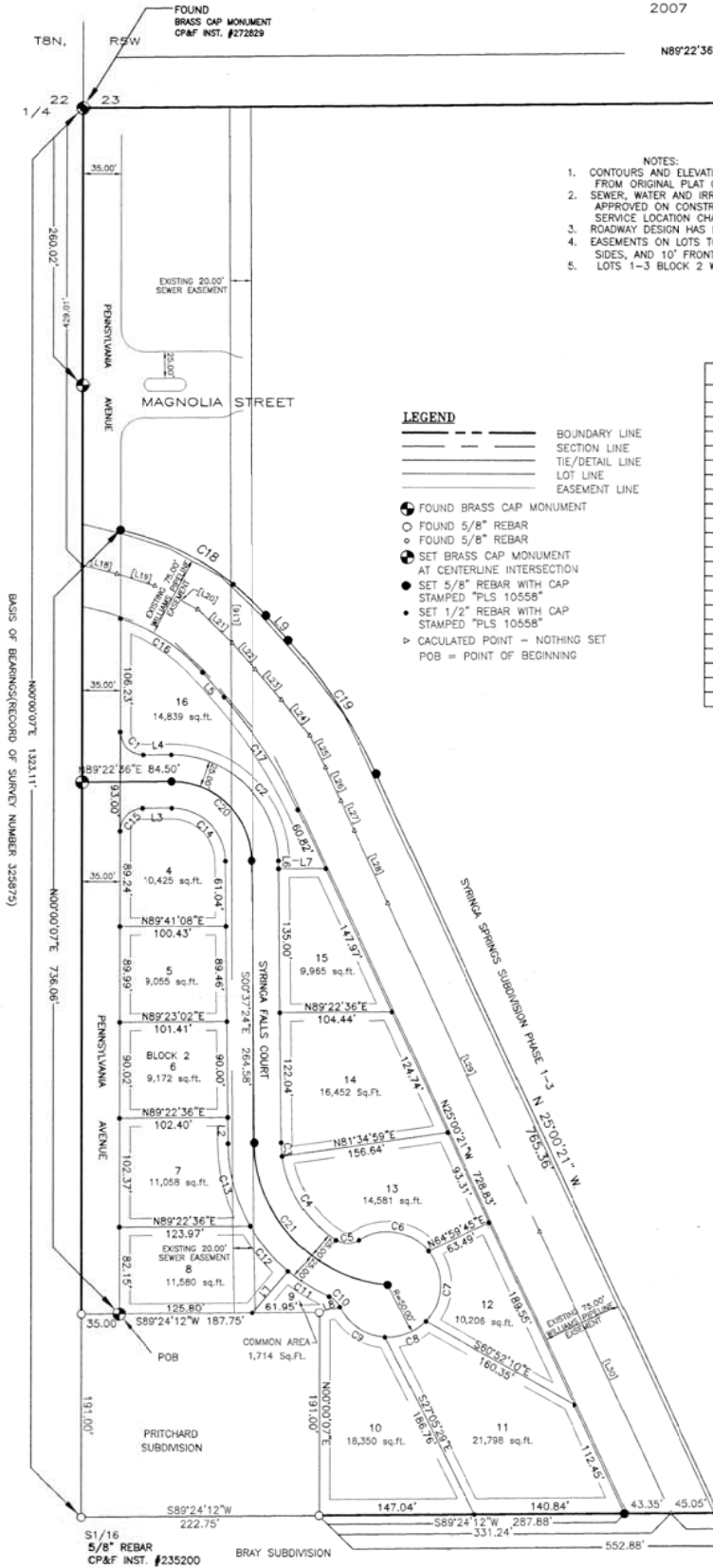
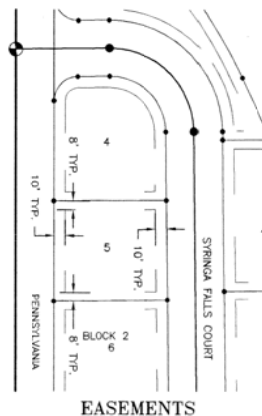
- LEGEND**
- BOUNDARY LINE
  - - - SECTION LINE
  - TIE/DETAIL LINE
  - LOT LINE
  - EASEMENT LINE
  - FOUND BRASS CAP MONUMENT
  - FOUND 5/8" REBAR
  - FOUND 5/8" REBAR
  - SET BRASS CAP MONUMENT AT CENTERLINE INTERSECTION
  - SET 5/8" REBAR WITH CAP STAMPED "PLS 10558"
  - SET 1/2" REBAR WITH CAP STAMPED "PLS 10558"
  - ▷ CALCULATED POINT - NOTHING SET
  - POB = POINT OF BEGINNING

CURVE TABLE						
CURVE	LENGTH	RADIUS	DELTA	TANGENT	CHORD	CHORD DIRECTION
C1	34.01	21.50	90°37'31"	21.74	30.57	N45°18'39"W
C2	157.08	100.00	90°00'00"	100.00	141.42	N45°37'24"W
C3	12.84	110.00	6°41'14"	6.43	12.83	N03°58'01"W
C4	96.07	110.00	50°02'31"	51.34	93.05	N32°19'53"W
C5	22.86	20.00	65°30'02"	12.86	21.64	S89°53'50"W
C6	72.34	50.00	82°53'38"	44.15	66.19	N81°24'22"W
C7	73.33	50.00	84°01'41"	45.04	66.93	N02°03'17"E
C8	42.44	50.00	48°38'17"	22.60	41.18	N68°23'17"E
C9	54.45	50.00	62°23'52"	30.28	51.80	S56°05'39"E
C10	14.24	20.00	40°48'16"	7.44	13.94	S45°17'51"E
C11	44.74	160.00	16°01'17"	22.52	44.59	S57°47'40"E
C12	55.20	160.00	19°45'57"	27.88	54.92	S39°47'20"E
C13	81.79	160.00	29°17'21"	41.81	80.90	S15°16'04"E
C14	78.54	50.00	90°00'00"	50.00	70.71	S45°37'24"E
C15	33.54	21.50	89°22'29"	21.27	30.24	N44°41'21"E
C16	93.52	173.00	30°58'21"	47.93	92.38	S57°10'03"E
C17	126.60	435.00	16°40'32"	63.75	126.16	S33°20'37"E
C18	161.84	253.50	36°34'42"	83.79	159.10	S59°58'13"E
C19	150.03	515.50	16°40'32"	75.55	149.50	S33°20'37"E
C20	117.81	75.00	90°00'01"	75.00	108.07	S45°37'24"E
C21	200.00	135.00	84°52'57"	123.45	182.21	S43°03'52"E

LINE TABLE		
LINE	BEARING	DISTANCE
L1	S39°48'20"W	52.05'
L2	S00°37'24"E	24.08'
L3	N89°22'36"E	27.95'
L4	N89°22'36"E	26.95'
L5	S41°40'53"E	30.86'
L6	N00°37'24"W	7.54'
L7	N89°41'08"E	43.36'
L8	N73°17'53"E	19.81'
L9	N41°40'53"W	30.86'

COMMON AREAS	
BLOCK	LOT
2	9
2	16

EASEMENT LINE TABLE		
LINE	BEARING	DISTANCE
[L14]	N01°02'18"W	85.92'
[L15]	N00°14'35"W	402.03'
[L16]	N00°14'23"W	398.77'
[L17]	N00°14'04"W	245.42'
[L18]	S76°00'51"E	32.49'
[L19]	S72°42'15"E	37.95'
[L20]	S61°34'13"E	45.88'
[L21]	S46°26'21"E	45.17'
[L22]	S41°40'53"E	33.08'
[L23]	S40°27'54"E	37.29'
[L24]	S37°44'26"E	42.31'
[L25]	S26°02'19"E	33.37'
[L26]	S24°59'45"E	34.30'
[L27]	S24°17'32"E	30.52'
[L28]	S25°10'08"E	75.12'
[L29]	S24°58'18"E	339.67'
[L30]	S25°04'34"E	292.45'



SURVEYOR:  
DAVID ARANGO  
400 S. MAIN STREET  
PAYETTE, IDAHO 83661  
PHONE: (208) 642-4452

343517

Book 7 Page 3

<p>Re-Plat of Syringa Springs Sub. PH. 2</p>	<p>Seven Oaks Development L.L.C. P.O. Box 703 Fruitland, Idaho 83619</p>	<p>REVISIONS</p> <table border="1"> <tr> <th>NO.</th> <th>DESCRIPTION</th> <th>DATE</th> </tr> <tr> <td>1</td> <td>Take/Kevin Shomaker original site</td> <td>03/21/07</td> </tr> </table>	NO.	DESCRIPTION	DATE	1	Take/Kevin Shomaker original site	03/21/07	<p><b>BASIC</b> Engineering, P.C.</p> <p>239 SW 3rd Street-Fruitland, Id 83619 208-452-2296</p>
NO.	DESCRIPTION	DATE							
1	Take/Kevin Shomaker original site	03/21/07							

